



Preserving the Past. Protecting the Future.

P.O. Box 75 - Stanley, Idaho 83278

Sawtooth Interpretive & Historical Association

A N N U A L N E W S L E T T E R 2 0 1 7



The 2017 Solar Eclipse set the stage for Sawtooth Association (SIHA) Summer



The SIHA Board steps up and selects three of its 2017 Sawtooth Forum and Lecture Series programs to feature the Solar Eclipse and Dark Skies in the Sawtooth Salmon River Country. We started with Brian Jackson BSU scientist, delving into the science of the Eclipse and night sky astronomy with telescope viewing of the Sawtooth Dark Sky. Dr. Steven Pauley and our standing in the Cosmos followed by our largest crowd ever, 185 attendees, with Paul Cox from SLOOH and his worldly experiences with Solar Eclipse events from Africa to Australia and beyond. A very captivating presentation. Then to top off our commitment to the once in a lifetime event for the Sawtooth Country, SIHA offered camping at the Stanley Museum for Eclipse Viewers. We offered the very low cost camping for a large crowd who praised our venue.

Let's work together to better the Sawtooth-Salmon River Country!

The Sawtooth Interpretive and Historical Association's (SIHA) programs can be described in many ways. Visitors have said they are exciting, educational, diverse, and family friendly. We take pride in our educational and historical programs every day. SIHA's team is dedicated to working with you to make your stay with us the best it can possibly be. All our programs are made possible by people like you, our members and donors.

The 2017 Fall Membership Campaign helps us prepare for the 2018 summer season. We ask that you renew your membership with us, become a new member, or donate to help us continue our vision of "preserving the past, protecting the future." **Any membership or donation to the Sawtooth Interpretive & Historical Association is tax deductible not only as a regular charitable donation, but for Idaho resident's it is also deductible as an Idaho State Educational Tax Credit.**

Stay up-to-date with the Sawtooth Association's programs, events, and more by joining our e-news contact list!

Please send your contact information to Sarah Cawley, Executive Director, at scawley@discoversawtooth.org.

Please support our new project at the Stanley Museum!

The Sawtooth Association has a big project ahead of us that we need your help with. As anyone who has visited the museum lately may have noticed, our office and apartment building, built in 1929, needs repair. **We need to put a new foundation under the building, add subfloor bracing, repair the roof, repair and reseal the exterior logs, and replace the log chinking.** Also, a non-historic addition, added in the 1980's must be removed or rebuilt for the restoration work to proceed.

What we propose is to remove the addition, and its kitchen and bathroom, and replace it with a new building designed to look like, on the exact location, a building that was on the site from the 1940's to the 1960's. This building was the clerk's apartment and housed the Stanley Ranger District Clerk when the site was part of the Valley Creek Ranger Station. The replicated building will be used to house up to four of our summer interns. The building will be located behind the ice house/toolshed building.

The exterior of the new building will have the same historic and rustic feel of the other buildings at the museum, but the interior will be comfortable, modern, and sanitary for Association staff.

The estimated cost of all this is \$70,000, a lot of money for a small non-profit. Please help by purchasing paving stones for \$100 each. Your stone will be inscribed as you wish. The stones will be used on site in pathways between the



buildings. Send in the attached order form, or go to www.discoversawtooth.org to purchase your paver today! **Donations will also be happily accepted. Thank you for your continued support of the Sawtooth Association!**

PLEASE SUPPORT US at the highest level you can, and we will see you during our summer activities! We hope to hear from you soon!



BOARD OF DIRECTORS & STAFF

BOARD

Gary Gadwa – President
Stewart Wilder – Vice President
Paul Hill – Treasurer
Ed Waldapfel – Secretary

Terry Clark
Erica Cole
Kay Davies
Ken and Bernice Hartz
Jess Haas
Steve Lipus
Tori Madsen
Hi McComish
Liesl Scherthanner

DIRECTOR EMERITUS

Art Selin

STAFF

Sarah Cawley, Executive Director
Laurii Gadwa, Outlet Manager
Nytashia Allbritton, Lead Naturalist
Kenny Werth, Museum Docent

2016 NATURALISTS & HISTORIC SPECIALIST

Claire Mann, Ashley Ramsey, Henry Vaughan,
Pam Williams, Samantha Zuger, and
Caroline Wickes (HS)

2017 PARTNERS

Redfish Lake Lodge, Idaho Rocky Mountain Ranch,
Sawtooth Society, Val A. Browning Foundation,
Sawtooth National Recreation Area, Smiley Creek
Lodge, and the Sawtooth Mountain Mama's

www.DiscoverSawtooth.org
P.O. Box 75 - Stanley, Idaho
83278 208.774.3517

NEWS FROM OUR FOUR PROGRAM AREAS:

1. Stanley Museum and Toolshed



Visitors were greeted by our new Museum Docent, **Kenny Werth**, and our Historic Specialist, **Caroline Wickes**. The Stanley Museum welcomed 3,879 visitors this year.

Kenny and **Caroline** updated displays and created new displays throughout the summer to give our visitors some new insights into local history. We now have an updated climbing display, with some new artifacts donated by local retired climber and guide **Kirk Bachman**. Other new artifacts include a Maytag gas powered Washing Machine originally

from the **Jason Vaught** residence in Lower Stanley and some unusual toys found in the old Wampum Trading Post donated by **Jon Christianson**. We were also able to interpret the farm implement displays thanks to **Kenny** and **Gary Gadwa**.

The **Sawtooth Society** and **Central Idaho RAC** also funded the new historical Museum sign that stand at our entrance, hopefully you saw it as you drove by.

We are continuing our work on the toolshed/woodshed display project. This building is attached to our Ice House. Visitors will be able to look back in time at the tools and equipment that the Forest Service used, when it operated the museum site as the Valley Creek Ranger Station from 1908 until 1972. Donations for this project came from retired Valley Creek Ranger Station employee, **Bill James**, the **Forest Service History Museum** in Country Homes, Washington, **Gary Gadwa**, and from the **Sawtooth NRA**.

2. Redfish Center and Interpretive Programs



The Redfish Center and Gallery opened its doors on June 9, 2017, and saw a staggering 12,974 visitors. That's a new record for us! Our new Lead Naturalist, **Nytashia Allbritton**, led the team of Naturalists through the 2017 season and helped in educating over 8,000 visitors through our daily programs. Programs included our guided walks, discovery stations, patio talks, evening programs and much more! This year we also worked

with 184 kids and adults in becoming Junior Rangers and Wilderness Explorers!

Additionally our Gallery and our new permanent display in the observation room attracted visitors. The Redfish Gallery organized by board member **Tori Madsen** included photographs, paintings, wooden bowls, bronze art and jewelry. Our new permanent display, designed by **Evelyn Philips** and funding provided by the **Sawtooth Society**, tells the story of Redfish Lake, featuring the sockeye salmon, the geology of the Sawtooths, and so much more.

The Redfish Center also welcomed **Rob Hart**, wilderness photographer, **Margaret Fuller**, local author and avid hiker, **Ed Cannady**, wilderness photographer, and **John Hughes**, Custer County Waterways Deputy, who enthralled evening program visitors. We would also like to thank **George Nedalea** from **Sawtooth Contracting LLC** for completing structural improvements this past fall and spring. Funding provided in part by **Idaho Heritage Trust**, **Sawtooth Society**, the **U.S. Forest Service**, and **Central Idaho RAC**.

3. 2017 Forum & Lecture Series

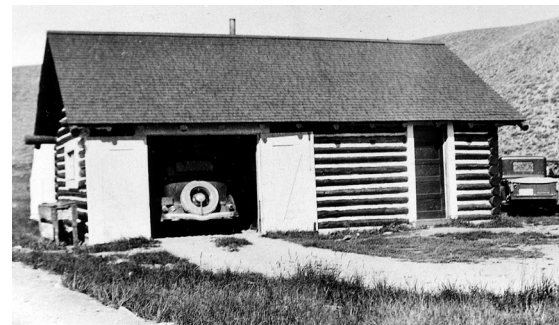


This year our Forum and Lecture Series (FLS) focused on the Fins, Feathers, and Features that make the Sawtooth-Salmon River country so amazing. We held eight programs at the Stanley Museum, where 655 people came to hear our speakers. Some of our lectures covered topics such as Bats of Idaho with Bill Doering and Rita Nixon, the eclipse with Paul Cox, and Fishes of Idaho with Dave

Cannamela. These lectures are presented every Friday night starting in July and running through August. We would also like to thank the **Redfish Lake Lodge** for supporting this program and supplying our speakers with meals.

Do you have any ideas for next season?
We would love to hear them! Send your thoughts to info@discoversawtooth.org.

4. Promoting & Preserving Local History



Our growing collection of photographs, oral histories, and artifacts is quite astounding! Thank you donors. We were especially pleased to interview **Joseph Bocuzzo** a Civilian Conservation Corps member at Redfish Camp in the late 1930's. He shared stories and memories of his time here as a 17 year old from New York City while his kids and grandkids sat

nearby absorbing the family history. We continue to add to our Oral History collections and our donors like the Sawtooth Mountain Mamas help bring us closer to transcribing our collections.

We were also able to sponsor a History Days tour to some folks in town thanks to **Kenny Werth** and **Gary Gadwa** for leading the talks. This is a new program the SA is holding where we spend time walking the Historic Walking Tour, and then we take a drive through the Stanley Basin on our Auto Tour. Look out for an email next year for more information and dates for this program!

Photos provided by: Erica Cole, Gary Gadwa, Liesl Scherthanner, and Ed Waldapfel

Staff Highlight

LAURI GADWA

The behind the scenes work of SIHA has always been a mystery to many people. How do we operate the outlets, the map sales, the book orders? **Laurii Gadwa** has worked with SIHA for a total of 19 years. She joined the Association in 1980, when it was known as the Sawtooth Interpretive



Laurii and Shadow

Association. Laurii then started the Stanley Museum at the Valley Creek Ranger Station, where she hired our first intern to create the Museum displays. Laurii stepped away in 1987 to manage the Redwood Motel, but rejoined us in 2005 as our Outlet Manager. She has dedicated countless hours to the Association in order to ensure that all outlets are well stocked, operations are running smoothly, and staff are well trained. Not only is Laurii our Outlet Manager, but she is also the wife of SIHA President, Gary Gadwa, and the mother of two children. She has also dedicated time to fostering many children here in Idaho, and being a phenomenal friend to all those in need.

Laurii has many years in Idaho and is a graduate from the University of Idaho with a Bachelor's of Arts in Theater Arts, Child Development, and Psychology. She has lived in Stanley for 38 years, and quickly became a large part of the community here. Her husband, Gary, was the Game Warden in the Sawtooth's for a very long time, where she learned the ways of not only the back country, but the town as well. Laurii has served on the Stanley City Council for 11 years, is the President of the Sawtooth Mountain Mama's, was on the Challis School Board for 13 years, and in her free time enjoys quilting, baking cookies, and reading any kind of book. Laurii's dedication to Stanley and to the Sawtooth-Salmon River Country is astounding. She will do whatever it takes to make this a safe, educational, and fun place to live, work, and visit.

**WATCH FOR OUR SPRING e-LETTER
WITH OUR 2018
CALENDAR OF EVENTS!**

LIKE US ON FACEBOOK!